

COVINGTON HOMES



MEDITERRANEAN *elevation A*



SPANISH *elevation B*



RUSTIC MOUNTAIN *elevation C*

TERRACES - TRADITIONAL

The Capri, Plan 101

Ranch
1,849 - 3,489 Finished Square Feet
3,701 Total Square Feet
2-4 bedroom, 2.5-3.5 baths,
greatroom, large kitchen, covered
patio, 3-car garage



Proud Builder
**St. Jude Dream Home®
Giveaway**

COVINGTON HOMES
13737 Struthers Rd, Suite 200, CS 80921
www.covingtonhomesco.com

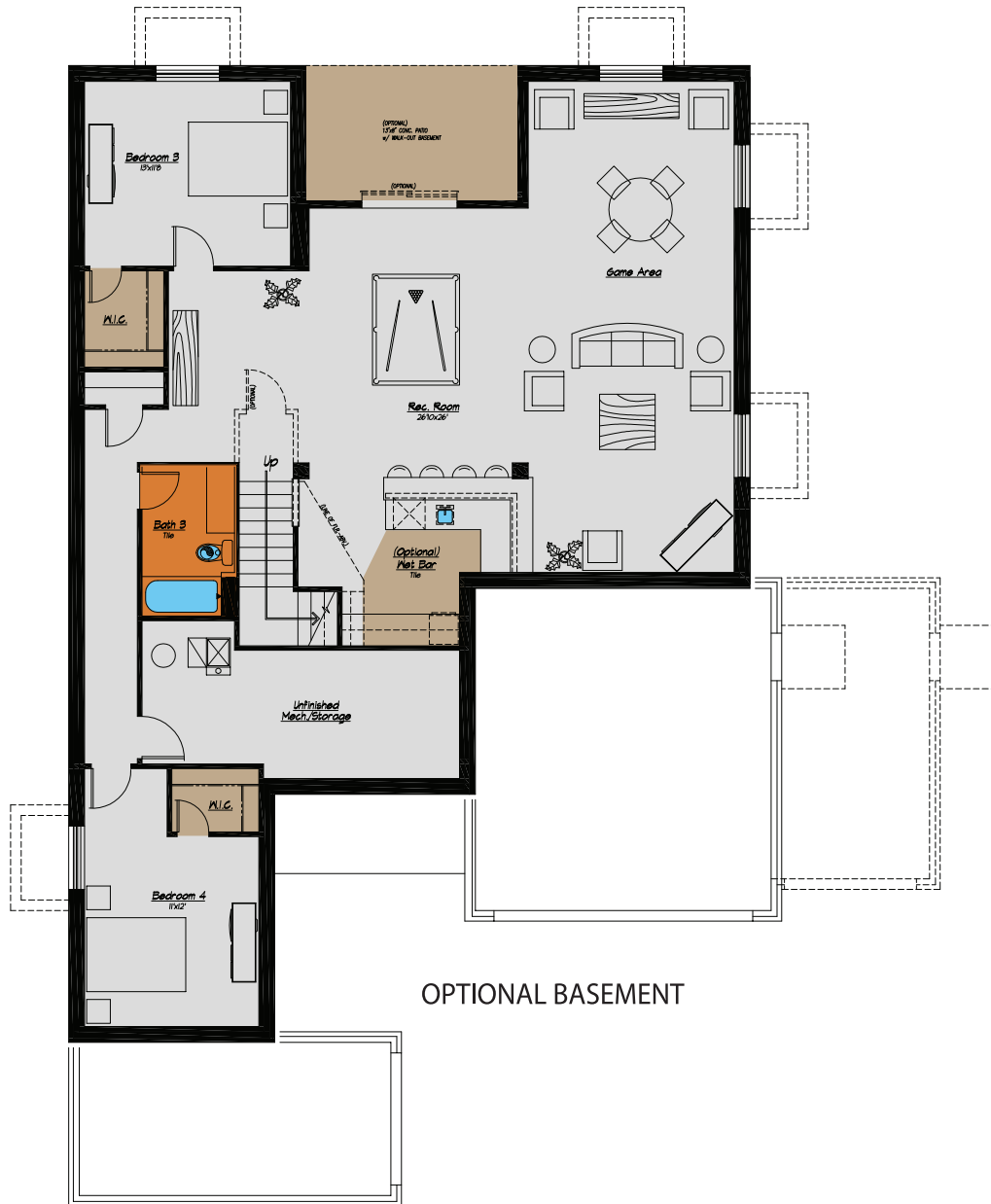
The Capri, Plan 101
Ranch
 1,849 - 3,489 finished square feet
 3,701 Total Square Feet
 2-4 bedroom, 2.5-3.5 baths,
 greatroom, large kitchen, covered
 patio, 3-car garage



MAIN LEVEL FLOOR



Prices, specifications and availability subject to change without notice, in a continuous effort to improve its product, Covington Homes reserves the right to make changes or modifications to plans, specifications, materials, features and colors without notice. Window and window locations may vary per exterior. All square footages are approximate and buyer is informed not to rely on estimates and should independently verify room dimensions on his/her home. rev. 1-2015.



The Capri, Plan 101
Ranch
 1,849 - 3,489 finished square feet
 3,701 Total Square Feet
 2-4 bedroom, 2.5-3.5 baths,
 greatroom, large kitchen, covered
 patio, 3-car garage

OPTIONAL BASEMENT



Prices, specifications and availability subject to change without notice, in a continuous effort to improve its product, Covington Homes reserves the right to make changes or modifications to plans, specifications, materials, features and colors without notice. Window and window locations may vary per exterior. All square footages are approximate and buyer is informed not to rely on estimates and should independently verify room dimensions on his/her home. rev. 1-2015.