

The Art of Interior Design



COVINGTON
COVINGTON HOMES

What makes a painting?

- Color
- Tone (lightness or darkness of a color)
- Line (an indication of where two things meet)
- Shape
- Space
- Texture (as you shift where you are standing, the angle of the light on the painting shifts, the shadows change, and thus the way you see the texture alters)
- Composition (arrangements of the elements in or the subject matter of a painting)
- Time and movement (how the viewer perceives and looks at the painting).

Painting.about.com



The Art of Interior Design

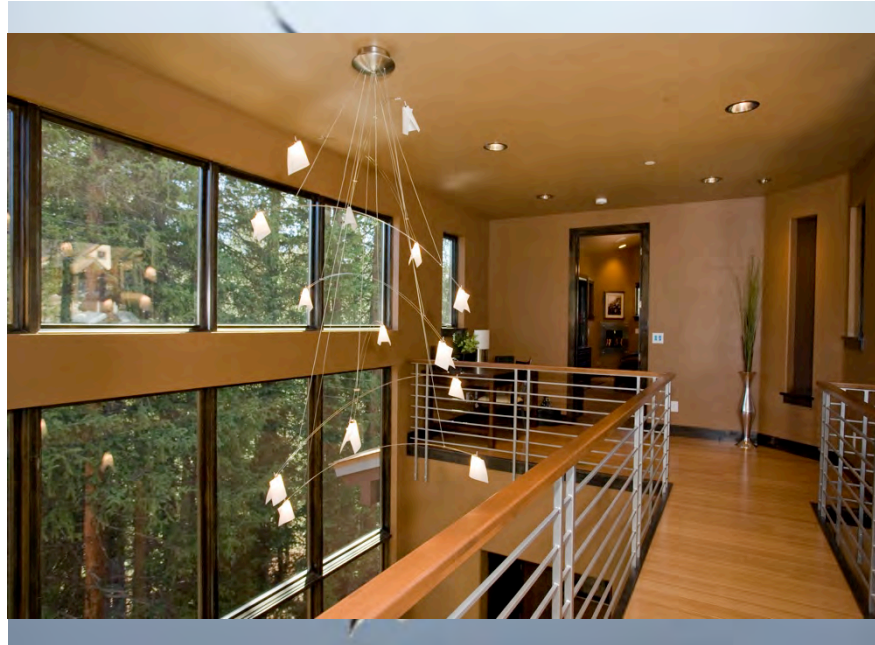
Interior Design can be daunting. So much to think about. So much to put together.

However, Interior Design can be very simple if we look at it from a different perspective and follow a few fundamentals.

For today's purpose we will be exploring the Art of interior design in regards to finishes and furnishings. This is from the perspective of an artist. Framing the design in the context of a painting.



What Do We Want to Create?



What STORY
do we want to
tell?

What do we
want to feel
when we walk
into the space?

We each have our own individual style. So first we have to search ourselves and find what that particular style is.
Use Resources to find your 'Style'

COLOR



This is the MOST important fundamental in Design.

Ask yourself questions such as:

- Is the timeless?
- Will I grow tired of this?
- How does this make me feel?



COLOR



Main color, complementary color, and accent color.

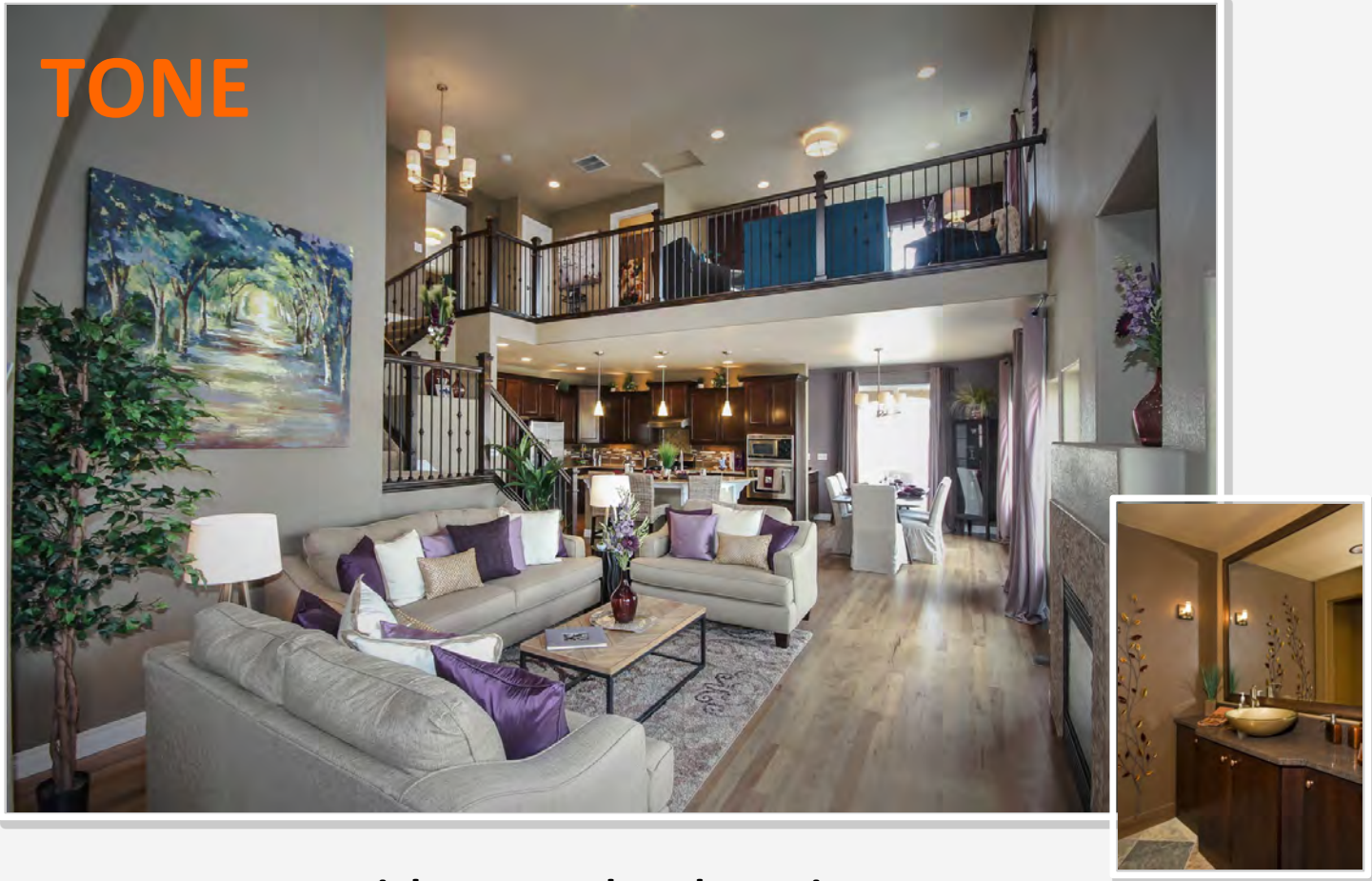
Much like a painting we search for **the one color** that stands out and speaks to us.

****From there we find a color that enhances the accent color beautifully and then we find a primary neutral color.**

Sometimes it is two or three colors.

****But remember to keep it manageable. Often times too many accent colors becomes too busy, especially if the accent colors themselves do not blend and complement each other well.**

TONE



Lightness and Darkness in Tone

Now that we have an idea of colors, what tones will we use?

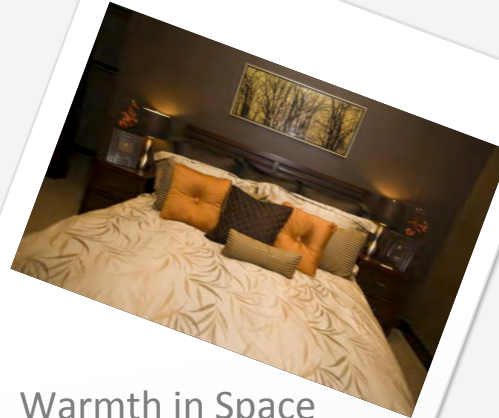
What is the size of the room? The layout of the plan? Does it call for light and airy? Or dark and deep? Will a juxtaposition of the two work? And will an accent wall help create comfort in a large space? Will an accent wall add contrast?

Things such as ceiling cut ins, accent walls, trim details, and light with dark help to create the tone in a space and add interest.

Space



Comfort in Space



Warmth in Space

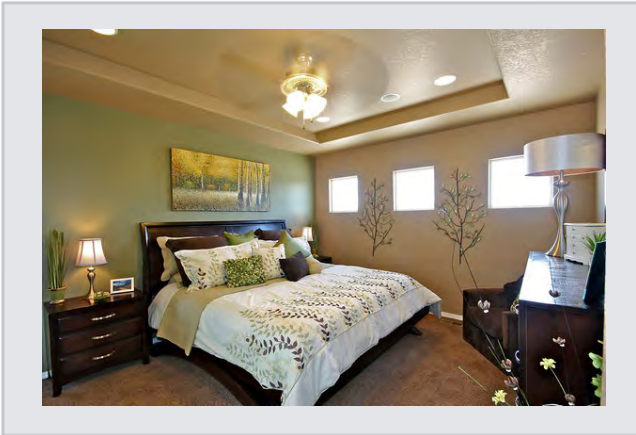
Style in Space



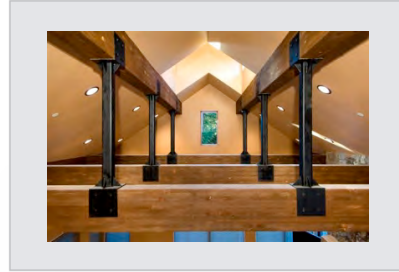
Now what are the spaces? Which areas are we trying to pull together? All Rooms? One room? Floors? Indoor to outdoor? How do we want to live in those spaces? What would fill those spaces elegantly? What are the needs of those spaces? What would add Personality What would add Interest?

Line and Shape

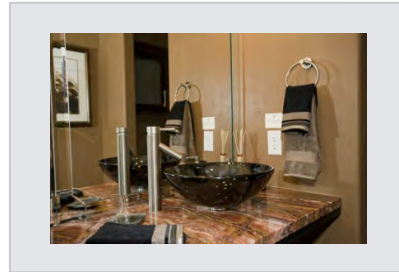
How do we use finishes, furniture, window treatments, decor, and textiles to form the lines & create the shapes?



How do the shapes relate to the rooms and spaces?



How do the shapes fill the space?



Do certain shapes look better together?

Do certain different shapes complement each other?

TEXTURE



What type of
Textures do we
want to use?



Smooth, Rough,
Rugged, , Patterns,
Movement?

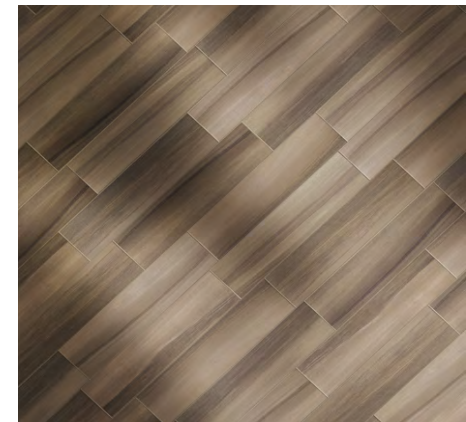


Glass, Stone,
Velvet, Satin,
Beads?

Tiles with
patterns, Mirrors,
and Textiles



Wood with Glass,
Mosaics with
Stone



TEXTURE



This is the First thing that attracts the eye



Use Multiple Textures in Layers



Get Creative with the use of Textures

Textures can be found in ALL aspects of decor



Make sure it is Tactile to BOTH the Eye and Hands



Composition



Putting it all together

Composition

The following items are very important in the composition of a painting.

In this case design of a space or spaces.

Aims Composition of a painting

Oil-painting-techniques.com

Unity:

Elements should be integrated so that the picture has an overall unity, with nothing left isolated or out of account.

Proportion:

Generally a pleasing relationship in proportions of one element to another.

Balance:

Closely related to proportion, but is usually applied to shapes and masses, which can be symmetrical, asymmetrical, or indeed anything that still somehow seems to be in balance.

Harmony:

A peaceful coexistence of elements, or at least a sense that the elements aid some coherent intention of the artist.

Variety:

Differences in tone, color, shapes, etc. create visual interest, and this variety strengthens a painting if not pushed too far.

Contrast:

Juxtaposing wide differences in elements create emphasis, essential if the painting is to have focus or make a statement.

Movement:

The viewer's eye is drawn round the painting by the individual life and vitality of the elements.

Repetition:

Properties that are repeated, usually with slight modifications, or in different elements, give emphasis and unity to a work.

Rhythm:

Repetition of elements, but at some constant interval

COVINGTON
COVINGTON HOMES



LUXURY
HOMES



THANK YOU!

For More Information

Contact us at:

info@covingtonhomesco.com

